

**SIMULFLEX**  
FOAM MATTRESS RANGE



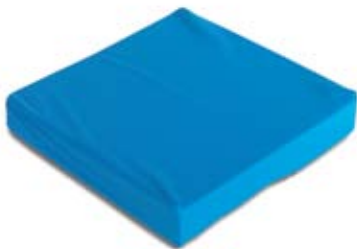
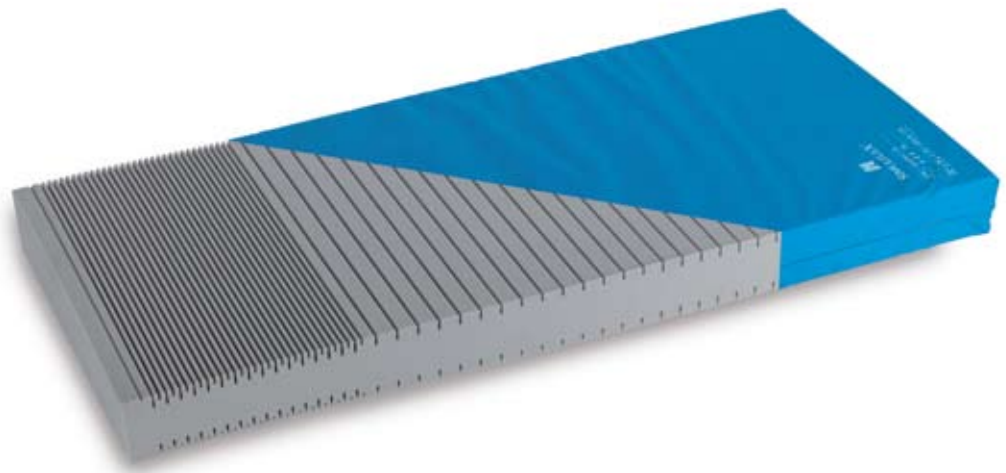
...with people in mind

# SIMULFLEX SYSTEMS

The *Simulflex*™ range has been developed to provide a cost effective 24 hour solution for your patients and staff. The range includes a pressure redistributing foam mattress replacement, overlay and seating system.

This range is made of high quality polyurethane foam and provides a cost effective alternative whilst rivalling more expensive systems in clinical performance.

The *Simulflex* mattress replacement is available in variable sizes. In addition, the overlay includes corner securing straps for extra security.



24 Hour Care Package - Optional seat cushion



Overlay System - A mattress overlay is also available and is easy to install

## Comfort and Safety in Mind

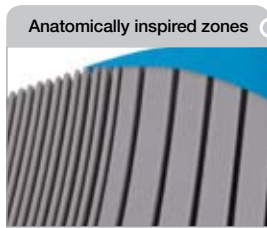
Suitable for hospitals, hospices, care homes for the sick and elderly or in community care. *Simulflex* meets all equipment decontamination guidelines and fire retardancy regulations.

## Safe and Convenient for Patients and Carers

The *Simulflex* mattress has been designed and tested by ArjoHuntleigh's research and development facility, to ensure good, reliable performance and value for money.

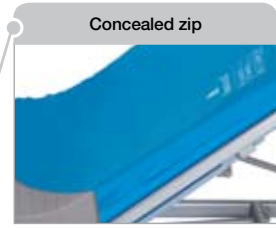
### Cover Features

- Two way stretch
- Vapour permeable
- Water resistant
- Antimicrobial, bacteriostatic and fungistatic
- Easy to clean and maintain
- Concealed zip
- Clearly marked covers with *TurnTable*™ guide and washing instructions



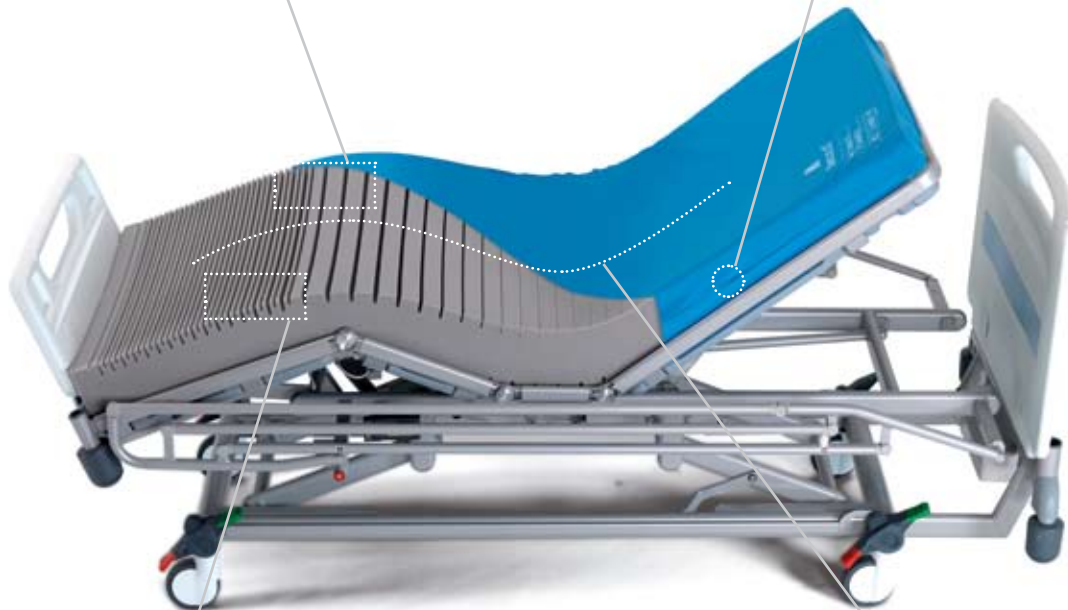
Anatomically inspired zones

Features three different zones of horizontally cut foam for excellent pressure redistribution.



Concealed zip

Increased infection control.



Extra comfortable head and heel zone

Increased number of smaller cuts on either end of the mattress provide extra comfort at the head and heel zone.

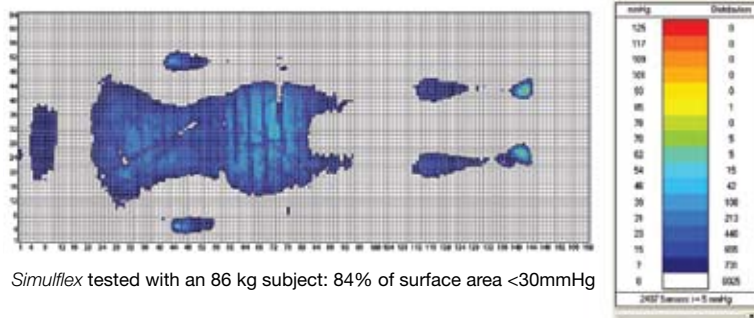


Suberb Profiling

Superb profiling in the gatched or supine position.



TurnTable Guide - All Simulflex mattress replacement systems carry the TurnTable Guide



Simulflex tested with an 86 kg subject: 84% of surface area <30mmHg

### Pressure Area Index

Pressure Area Index (PAI) indicates the ability of a surface to spread pressure across available contact area. The higher the PAI, the better the performance.

# PRODUCT SPECIFICATIONS

4-way Turn Mattress Replacement	Dimensions H x W x D	Order code
MR Standard	1980 x 860 x 150 mm (78 x 33.9 x 5.9")	120SX198/086
MR Community	1900 x 920 x 150 mm (74.8 x 36.2 x 5.9")	120SX190/092
MR Contoura	1820 x 780 x 150 mm (71.7 x 30.7 x 5.9")	120SX182/078
User Weight Limit:	120 kg (264 lbs)	
Warranty: 2 years for foam and cover		
<b>Overlay System</b>		
OL Standard	1980 x 860 x 85 mm (78 x 33.9 x 3.35")	SO198/086
OL Community	1900 x 920 x 85 mm (74.8 x 36.2 x 3.35")	SO190/092
Warranty: 6 months for foam and cover		
<b>Seat Cushion</b>		
Seat	430 x 430 x 70 mm (6.9 x 6.9 x 2.8")	SS043/043
User weight limit:	90 kg (198 lbs)	
Warranty: 6 months		
<b>Mattress Replacement Fire Retardancy:</b>		
MR System meets BS EN 597 -1: 1995, BS EN 597 -2: 1995 and BS 6807: 1996, Section 2, Ignition Sources 0,1 and 5 Overlay System meets BS EN 597-1: 1995, BS EN 597 -2: 1995 and BS 6807: 1996, Section 2, Ignition Sources 0,1 and 5 in the top position		
<b>Cover Fire Retardancy:</b>		
Fully enclosing covers fire retardant to BS 7175		

ArjoHuntleigh is a branch of Arjo Ltd Med. AB.

Only ArjoHuntleigh designed parts, which are designed specifically for the purpose, should be used on the equipment and products supplied by ArjoHuntleigh. As our policy is one of continuous development we reserve the right to modify designs and specifications without prior notice.

® and ™ are trademarks belonging to the ArjoHuntleigh group of companies.  
© ArjoHuntleigh, 2010

**ARJOHUNTLEIGH**  
GETINGE GROUP

[www.ArjoHuntleigh.com](http://www.ArjoHuntleigh.com)

**GETINGE GROUP** is a leading global provider of products and systems that contribute to quality enhancement and cost efficiency within healthcare and life sciences. We operate under the three brands of **ArjoHuntleigh**, **GETINGE** and **MAQUET**. **ArjoHuntleigh** focuses on patient mobility and wound management solutions. **GETINGE** provides solutions for infection control within healthcare and contamination prevention within life sciences. **MAQUET** specializes in solutions, therapies and products for surgical interventions and intensive care.

**ArjoHuntleigh**  
310-312, Dallow Road Luton  
Bedfordshire LU1 1TD  
United Kingdom  
Phone: +44 1582 745 800  
Fax: +44 1582 745 866  
E-mail: [international@arjohuntleigh.com](mailto:international@arjohuntleigh.com)

