

**ARJOHUNTLEIGH**

GETINGE GROUP

**MALIBU**

THE FLEXIBLE SYSTEM  
FOR ASSISTED BATHING



...with people in mind

## MAKE THE BENEFITS OF BATHING ACCESSIBLE

Time in the tub is time well spent. Bathing is one of life's pleasures, an enjoyable and relaxing interlude that also provides important benefits for health and wellbeing. For people in care environments, bathing is not just about keeping clean, it is about maintaining and enhancing quality of life. The considerable benefits of bathing should be accessible for everyone.





## EASY TO USE AND NOW EASIER ON THE EYE

*Malibu* has become a well-established system for providing safe, comfortable conditions wherever assisted bathing is required. The system has always been easy for carers to use and now it is also easier on the eye. With many care facilities placing a greater emphasis on creating an attractive environment, ArjoHuntleigh has focused on enhancing the visual appeal of *Malibu* in a new redesign.

The redesign has given *Malibu* a smoother, friendlier exterior that blends in well with any care setting. Redesign improvements have also eliminated the need for a shower pole.

*Malibu* has many features to improve safety and efficiency, such as electronic scalding protection and the time-saving Auto-Fill function. Product hygiene is a top priority and options include an integrated disinfection system and automatic disinfection of the spa.

# KEY FEATURES

## Emergency stop



- Efficient and easy-to-use emergency stop for an immediate stop of all functions

## Shower handle



- Shower handle with adjustable spray; hard or soft water spray for different needs and skin conditions.

## New control panel



- Positioned for carer convenience at the tub's foot end
- Easy control of functions such as air spa and raising/lowering of the tub

## Handset control



- Control of functions: lift in/out
- Allows carer to work close to the resident

## Disinfection



- An integrated disinfection system with built-in disinfectant spray handle operated from the control panel.





### Transfer chair



- An integrated solution for safe transport, toileting, tub transfers and bathing
- Options include commode or reclining comfort seat and fixed or dockable seat with wheeled chassis for transport

### Height adjustable



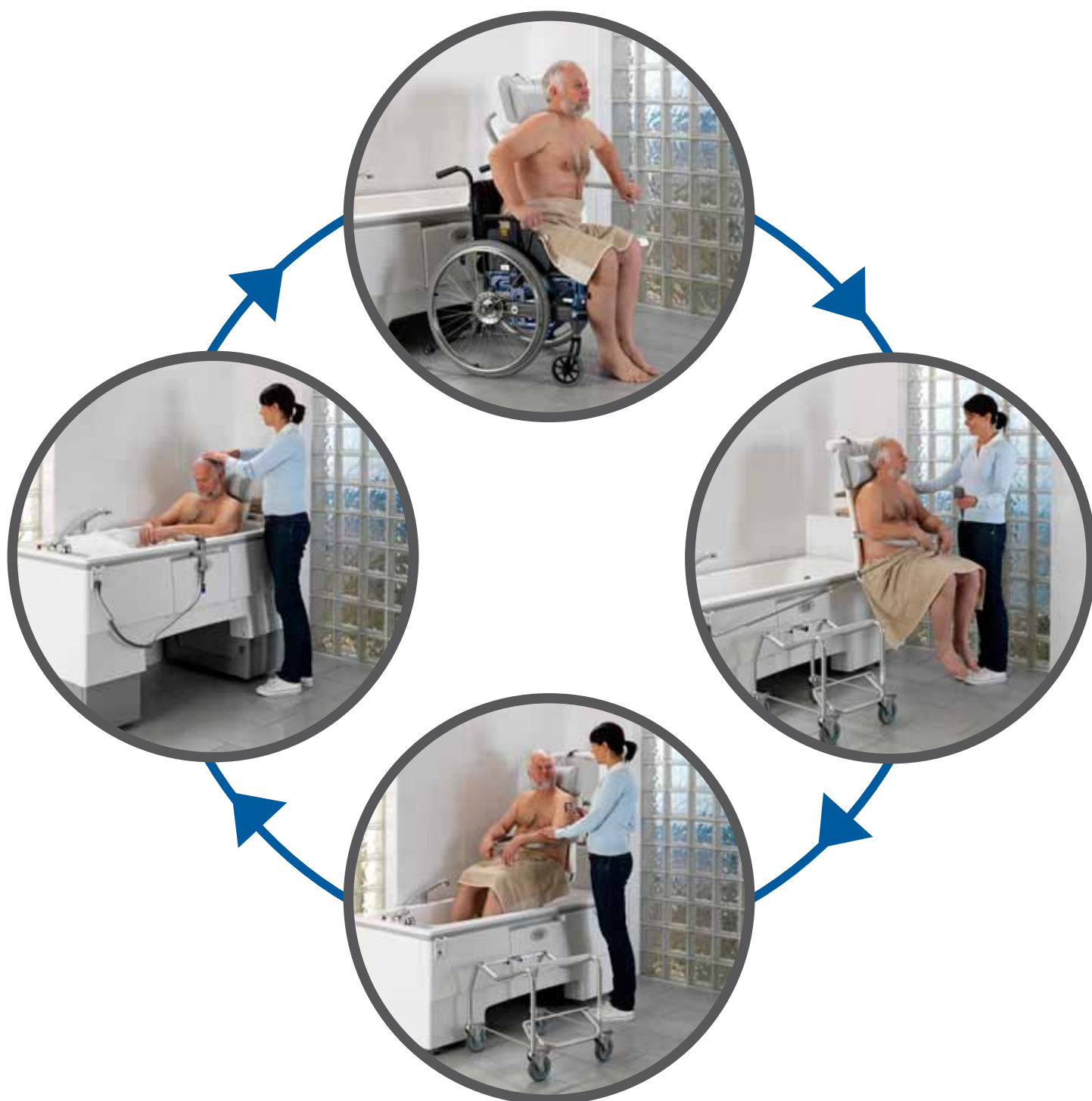
### Belts



- Adjustable belts for secure and comfortable use of the transfer chair

## ASSISTED BATHING CYCLE

The ideal configuration for the assisted bathing cycle is a height-adjustable tub with transfer seat lift, and a wheeled chassis for transport. After attaching the seat to the chassis, the carer collects the resident. In the bathroom, the seat is docked with the lift. The seated resident is raised and then lowered into the tub under handset control.





## A SYSTEM TO MEET DIFFERENT NEEDS

***Malibu* covers all aspects of the assisted bathing cycle – transport, transfers and the bathing session – with solutions adapted for individual mobility levels.**

*Malibu* is a complete bathing system that can be configured to provide easy access for assisted bathing sessions. The system meets the different needs of people within the A to C categories of the Mobility Gallery.\* Intended for private or semi-private bathrooms, *Malibu* is suitable for a range of settings from domestic environments to care facilities.

For residents, *Malibu* offers an access solution suited to their mobility level, allowing them to fully enjoy the benefits of bathing. Using the handset to operate the integrated transfer seat, a single carer can manage assisted bathing sessions without manual lifting.

Choosing *Malibu* can enhance the quality of resident's lives and the working lives of their carers.

\* See back page for further details.

### **Carer benefits**

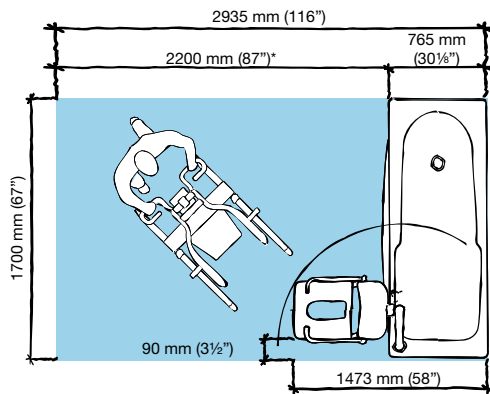
- Ergonomic working methods
- No manual lifting
- Simple-to-operate system
- Handset control
- Improved working environment

### **Resident benefits**

- Access solutions optimised for personal mobility levels
- Familiar system can be adapted as needs change
- Safe, dignified handling during assisted sessions
- A complete solution that minimises transfers
- Greater comfort and security to enjoy bathing

# PRODUCT SPECIFICATIONS

## Space requirement



Blue area shows the minimum working area required for the staff to be able to use the mechanical aids in an ergonomic way from one side.

\* NB Free space can be reduced to 1100 mm (43 1/5") if lift transfer is not required within the bathroom.

## Mobility Gallery

Suitable for Albert, Barbara and Carl



**A Albert**, who is ambulatory and independent

**B Barbara**, who can support herself to some degree

**C Carl**, who sits in a wheelchair and has little capacity to support himself

Please contact ArjoHuntleigh for further information on the Mobility Gallery™.

## Accessories



Head support



Dockable chair with wheeled chassis



Bedpan



Belts



Handles

## Product Information

Bath tub length	1600/1700 mm (63"/67")
Bath tub width	765 mm (30 1/8")
Malibu 1600 tub volume (full, without resident)	237 l
Malibu 1700 tub volume (full, without resident)	256 l
Lifting stroke (bath tub)	300 mm (11 3/4")
Max lifting capacity bath tub (resident + water)	386 kg (851 lbs)
<b>Patient lift</b> (Overall max. height 1950 mm / 76 3/4")	
Lifting stroke (lift arm)	530 mm (21")
Safe working load (resident weight)	130 kg (286 lbs)

## Approvals

WRAS-UK

## Conformity

EN 1717- Protection against pollution of potable water in water installations.

IEC 60601-1, IEC 60601-2

Only ArjoHuntleigh designed parts, which are designed specifically for the purpose, should be used on the equipment and products supplied by ArjoHuntleigh. As our policy is one of continuous development we reserve the right to modify designs and specifications without prior notice.

® and ™ are trademarks belonging to the ArjoHuntleigh group of companies.  
© ArjoHuntleigh, 2010

# ARJOHUNTLEIGH

GETINGE GROUP

[www.ArjoHuntleigh.co.uk](http://www.ArjoHuntleigh.co.uk)

### ArjoHuntleigh UK – Head Office

310-312 Dallow Road, Luton,  
Bedfordshire, LU1 1TD, United Kingdom  
Sales Phone: +44 (0) 1582 745700  
Sales Fax: +44 (0) 1582 745745  
Rental 24hr Helpline Lo-call Phone: +44 (0) 8457 342000  
Rental Fax: +44 (0) 1582 745843  
Email: [sales.admin@huntleigh-healthcare.com](mailto:sales.admin@huntleigh-healthcare.com)

### ArjoHuntleigh UK – Service and Technical Centre

St Catherine Street  
Gloucester, GL1 2SL, United Kingdom  
Phone: +44 (0) 8702 430430  
Service Fax: +44 (0) 1452 525207  
Email: [ukservice@arjo.co.uk](mailto:ukservice@arjo.co.uk)