

ARJOHUNTLEIGH

GETINGE GROUP

LIFEGUARD TROLLEY RANGE



...with people in mind



LIFEGUARD RANGE

Patient trolley range suitable for trauma, transfer, examination and imaging, treatment, and recovery.

LG 55

- Full length X-ray compatible
- Full length C-arm compatible
- Lateral X-ray compatible
- Safe Working Load 250 kg (550 lbs)



LG 50

- Optional full length X-ray compatible
- Optional full length C-arm compatible
- Safe Working Load 250 kg (550 lbs)



LG 20

- Optional full length X-ray compatible
- Range of customer-defined options to suit needs/budgets
- Safe Working Load 180 kg (396 lbs)



YOUR PARTNER IN PATIENT MANAGEMENT

The Lifeguard® range of variable height trolleys offers flexible solutions designed to improve all aspects of patient management. Durable and easy to use, the trolleys' light weight and excellent manoeuvrability helps to facilitate in the reduction of moving and handling risks, and includes a wide range of features, options and accessories to meet a variety of clinical needs and budgets.



Moving and handling

- Excellent height range
- Dual-sided foot pedals for hi-lo (and Trendelenburg/Reverse Trendelenburg on LG 50 and LG 55)
- *Easitrack*™ 5th wheel castor system
- Dual height, ergonomic push-pull handles

Imaging

Trolleys in the *Lifeguard* range can support full-length imaging techniques using conventional X-ray cassette and C-arm systems.

(Note; not suitable for use with MRI equipment)



Lifeguard 55 sliding X-ray cassette holder



Lifeguard 55 full length C-arm access



Lifeguard 50 & 20 full length elevating X-ray platform



Infection control

Open architecture and smooth surfaces used in the construction of *Lifeguard* trolleys allow for easy cleaning and decontamination of all areas.



Flexibility and choice

Lifeguard provides the user with a range of features to support patient management in the healthcare environment. The versatile *LG 20* trolley offers a wider choice of user-defined options, and can be tailored to suit differing needs and budgets. Selectable options include an elevating X-ray cassette platform and *Easitrack* 5th wheel castor system.

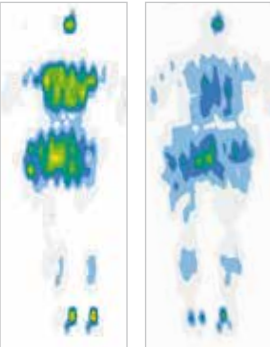


LG 20 shown in "off-white" colour



FLEXIBLE MATTRESS OPTIONS

A range of mattress pads is available to fit the *Lifeguard* trolley (see Product Specifications), including the Bi-Flex® Pressure Re-Distributing Mattress, developed to assist in the prevention of pressure ulcers.



Standard mattress Bi-Flex mattress

Low  High
Interface pressure



Bi-Flex mattress shown on LG 55 trolley

ACCESSORIES

Clip-on table



Foot end panel



Safety side pads



Monitor shelf /
Notes holder



Arm board



IV drip rod



Standard on LG 55 and LG 50 models

PRODUCT SPECIFICATIONS

Features	LG 55	LG 50	LG 20
Gas spring assisted adjustable backrest (0-87°)	•	•	•
Dual-sided foot pedals for hi-lo/Trendelenburg/Rev. Trendelenburg	•	•	
Dual-sided foot pedals for hi-lo			•
Emergency head-end foot pedal for Trendelenburg	•	•	
Lever operated Trendelenburg tilt at head end			•
Dual height ergonomic push/pull handles	•	•	•
Full-length radiolucent mattress platform	•	•	•
Full-length sliding X-ray cassette tray	•		
Full-length elevating X-ray cassette platform		(•)	(•)
Easitrack 5th wheel steering castor system	•	•	(•)
200mm (8") diameter anti-static castors	•	•	•
Central brake/steer castor system - 4 corner activation	•	•	
Central brake/steer castor system - 2 corner activation (at head end)			•
Integral folding IV drip rod (at head end)	•	•	•
Stowable IV drip rod (on trolley base)	•	•	•
Integral folding Stainless Steel safety sides	•	•	•
Storage for medical gas cylinder (size D, E or F)	•	•	•
Storage for patients belongings	•	•	•
Bracket of mounting of Oxygen/suction equipment	•	•	•
Detachable folding monitor shelf/notes holder	•	•	(•)
Colour - off-white paint/mouldings	•	•	•
Colour - grey paint/dark grey mouldings	(•)	(•)	(•)
Safe Working Load	250 kg (550 lbs)	250 kg (550 lbs)	180 kg (396 lbs)
Platform tilt range (Trend./Rev.Trend)	+/- 12°	+/- 12°	+ 12°
Platform height range	560-930 mm (22-36½")	560-930 mm (22-36½")	600-920 mm (23½-36¼")
Patient surface width	670 mm (26")	670 mm (26")	670 mm (26")
Overall width	770 mm (30")	770 mm (30")	770 mm (30")
Overall length	2110 mm (83")	2110 mm (83")	2110 mm (83")
Mattress options	Order Code	• Standard (•) Optional	
65 mm (2½") deep mattress pad with 2-way stretch cover	LGMAT/10		
2-part Transfer Mattress	LGMAT/13		
<i>Bi-Flex</i> * Pressure Re-distributing Mattress	TRM2		

ArjoHuntleigh is a branch of Arjo Ltd. Med. AB

Only ArjoHuntleigh designed parts, which are designed specifically for the purpose, should be used on the equipment and products supplied by ArjoHuntleigh. As our policy is one of continuous development we reserve the right to modify designs and specifications without prior notice.

© and ™ are trademarks belonging to the ArjoHuntleigh group of companies.
© ArjoHuntleigh, 2014

* part of the ArjoHuntleigh Therapy and Prevention Range



ARJOHUNTLEIGH

GETINGE GROUP

www.ArjoHuntleigh.com

GETINGE GROUP is a leading global provider of products and systems that contribute to quality enhancement and cost efficiency within healthcare and life sciences. We operate under the three brands of **ArjoHuntleigh**, **GETINGE** and **MAQUET**. **ArjoHuntleigh** focuses on patient mobility and wound management solutions. **GETINGE** provides solutions for infection control within healthcare and contamination prevention within life sciences. **MAQUET** specializes in solutions, therapies and products for surgical interventions and intensive care.

ArjoHuntleigh AB
Hans Michelsensgatan 10
211 20 Malmö
Sweden
Phone: +46 (0) 10 335 45 00