

ARJOHUNTLEIGH

GETINGE GROUP

ALENTI

THE COMFORTABLE LIFT

HYGIENE CHAIR



...with people in mind

SAFETY AND COMFORT

***Alenti* is an integral part of a safe, comfortable bathing cycle. This lift hygiene chair from ArjoHuntleigh gives the resident superior comfort and constant security during transfers, transport and the bathing session itself.**

Alenti enables residents such as Albert, Barbara and Carl in the Mobility Gallery to gain comfortable access to the benefits of bathing.

Used with the *Rhapsody* tub from ArjoHuntleigh, *Alenti* forms a complete bathing system. The resident remains secure on the *Alenti* seat from the moment they are collected at the bedside to the moment they are returned clean and refreshed to the bedroom after the bathing session.

Alenti is a versatile lift hygiene chair. As well as being used in the lifting, transport and bathing of residents, it is also designed to provide optimum support and ergonomics in toileting and pedicure routines.



Bedside collection

Collecting the resident from the bed is an efficient and safe routine. The resident is transferred onto the *Alenti* seat, which is optimally positioned at the bedside.



Transfer & transport

After the transfer, the seat is raised to the optimum height for transport. The resident is securely seated supported by the safety belt and the embracing arms of *Alenti*.



Smooth transfer to tub

At the bathside, the patient is lowered into the tub. Once the seat is submerged, the back support is swung back and the resident is assisted in leaning back in the bath.



Showering in the tub

After bathing, the *Alenti* seat is raised to bring the resident to an optimum height for the carer to comfortably perform the showering off routine.





AN INTEGRATED SYSTEM ENHANCES ERGONOMICS

Alenti can help you optimise ergonomics in the bathing cycle when it is used as an integrated part of a complete ArjoHuntleigh bathing system.

The benefits of using *Alenti* are maximised when it operates as part of an integrated and complete ArjoHuntleigh bathing system. *Alenti* is compatible with all lengths of ArjoHuntleigh height-adjustable baths, as well as with the *Century* sit bath.

With *Alenti*, a single carer can safely manage all aspects of the bathing cycle and work in an ergonomically sound way at all times. The battery-powered *Alenti* offers many features designed to enhance ergonomics – from handset control and height-

adjustability to ergo grips and central braking. Using *Alenti* means eliminating manual lifting from the bathing cycle and the number of resident transfers is minimised, as the resident stays on the *Alenti* seat during all procedures.

An integrated bathing system enhances ergonomics. Using the height-adjustable *Alenti* in conjunction with a height-adjustable ArjoHuntleigh tub is the perfect combination for optimised ergonomics, as carers can always perform routines at the correct working height.





Integration benefits

An integrated bathing system provides a better working environment and gives the carer more time to focus on the resident, enabling high-quality one-to-one care.



Ergonomic routines

Easy, handset-controlled height adjustment means the *Alenti* seat can always be set at the optimum working height to ensure best ergonomics.



FEATURES AND BENEFITS



Ergo grips

Ergonomically designed handlebar grips ensure good bedside and bathside manoeuvring of the *Alenti* and easy cornering when transporting the resident.



Weigh residents on the way

With a highly accurate on-board electronic scale, *Alenti* can be used as a more convenient alternative for weighing residents. Weighing can be done on the way to the bath.



Keep going with 2 x power

The unit is always delivered with two high-capacity batteries. With one battery always fully charged, *Alenti* offers maximum availability, as it is always ready for use.



Safety belt

The comfortable belt ensures optimum support, so the resident remains securely in position while on the *Alenti*.



Reassuring feel back

Residents with a greater degree of mobility feel reassuring contact with the anatomically designed seat to confirm correct positioning when seating themselves.



Optimised lateral transfers

With the *Alenti* seat adjusted to the optimum height, many wheelchair-bound residents are able to make a smooth sideways transfer.



Easy cleaning routines

The seat's one-piece construction and smooth surfaces makes it hygienic and easy to clean and disinfect.



Complete control

Raising, lowering and central braking functions are efficiently controlled with a handset, enabling the carer to stay close to the resident.



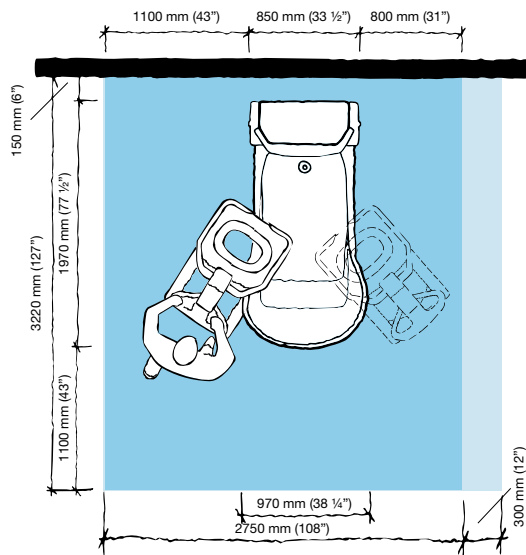
Free wheeling

Specially designed smooth-running castors make *Alenti* highly manoeuvrable and easy to turn.



PRODUCT SPECIFICATIONS

Space requirement



- Blue area shows the minimum working area required for the staff to be able to use the mechanical aids in an ergonomic way from one side.
- Light blue area shows required extension of working area to facilitate activities from either side to provide adequate access for the resident, mechanical aid and assisting carer.

Product information

Safe working load	182 kg (400 lbs)
Lifting stroke	585 mm (23")
Total width	605 mm (23 3/4")
Total length	900 mm (35 1/2")
Protection class	IP 66 (Handset)

Alenti accessories:

Integrated scale, verified for the EC market

Bedpan holder

Bedpan with lid

Leg rest for pedicure

Only ArjoHuntleigh designed parts, which are designed specifically for the purpose, should be used on the equipment and products supplied by ArjoHuntleigh. As our policy is one of continuous development we reserve the right to modify designs and specifications without prior notice.

® and ™ are trademarks belonging to the ArjoHuntleigh group of companies.
© ArjoHuntleigh, 2009.

Mobility Gallery

Suitable for Albert, Barbara and Carl.



A Albert, who is ambulatory and independent.

B Barbara, who can support herself to some degree.

C Carl, who sits in a wheelchair and has little capacity to support himself.

Please contact ArjoHuntleigh for further information on the Mobility Gallery™.

ARJOHUNTLEIGH

GETINGE GROUP

www.ArjoHuntleigh.com

Arjo International AB

PO Box 61

SE-241 21 Eslöv

SWEDEN

Phone: +46 413 645 00

Fax: +46 413 645 63

GETINGE GROUP is a leading global provider of products and systems that contribute to quality enhancement and cost efficiency within healthcare and life sciences. We operate under the three brands of **ArjoHuntleigh**, **GETINGE** and **MAQUET**. **ArjoHuntleigh** focuses on patient mobility and wound management solutions. **GETINGE** provides solutions for infection control within healthcare and contamination prevention within life sciences. **MAQUET** specializes in solutions, therapies and products for surgical interventions and intensive care.